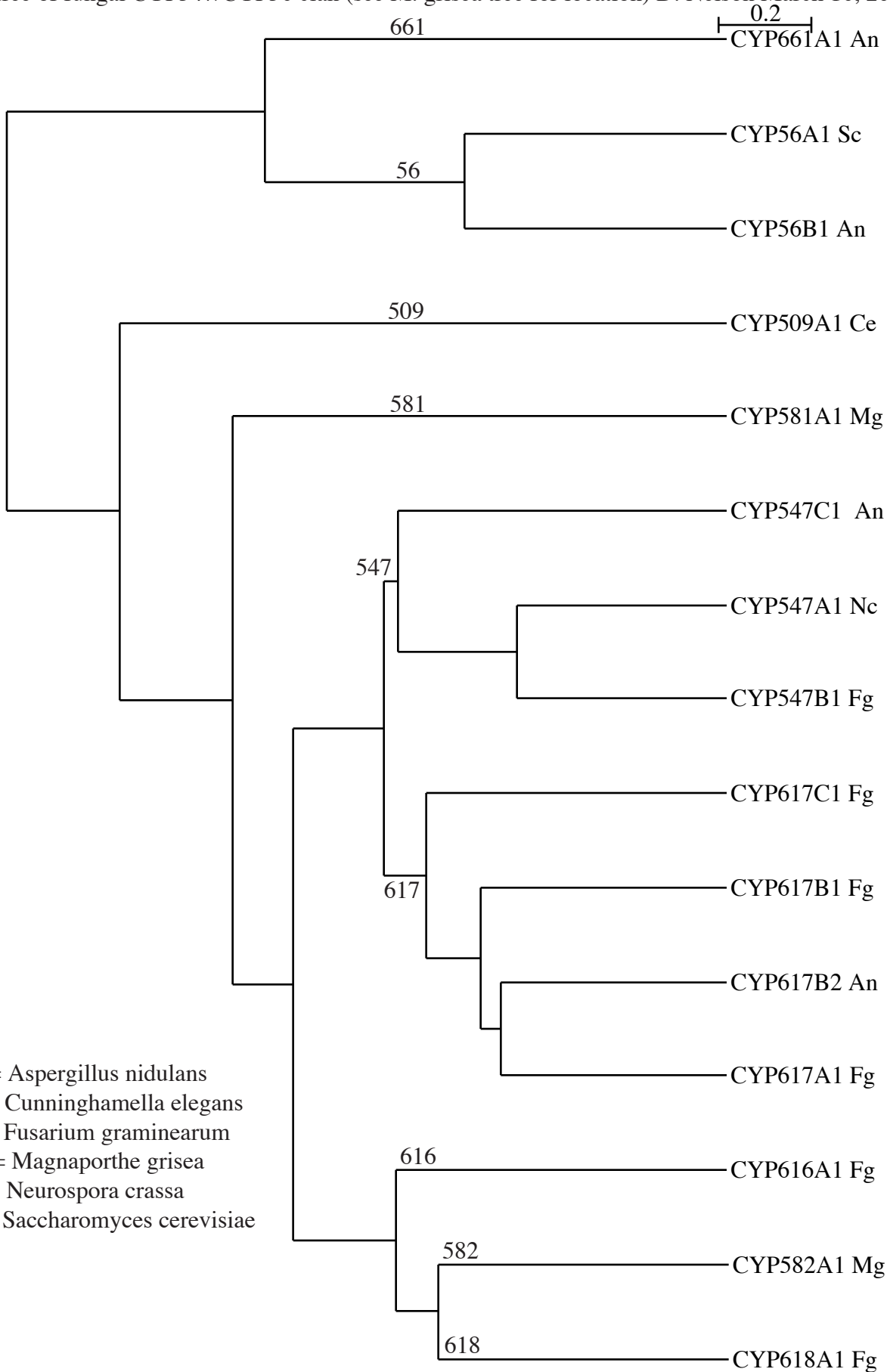


UPGMA tree of fungal CYP547/CYP56 clan (see *M. grisea* tree for location) D. Nelson March 16, 2004



An = *Aspergillus nidulans*
 Ce = *Cunninghamella elegans*
 Fg = *Fusarium graminearum*
 Mg = *Magnaporthe grisea*
 Nc = *Neurospora crassa*
 Sc = *Saccharomyces cerevisiae*