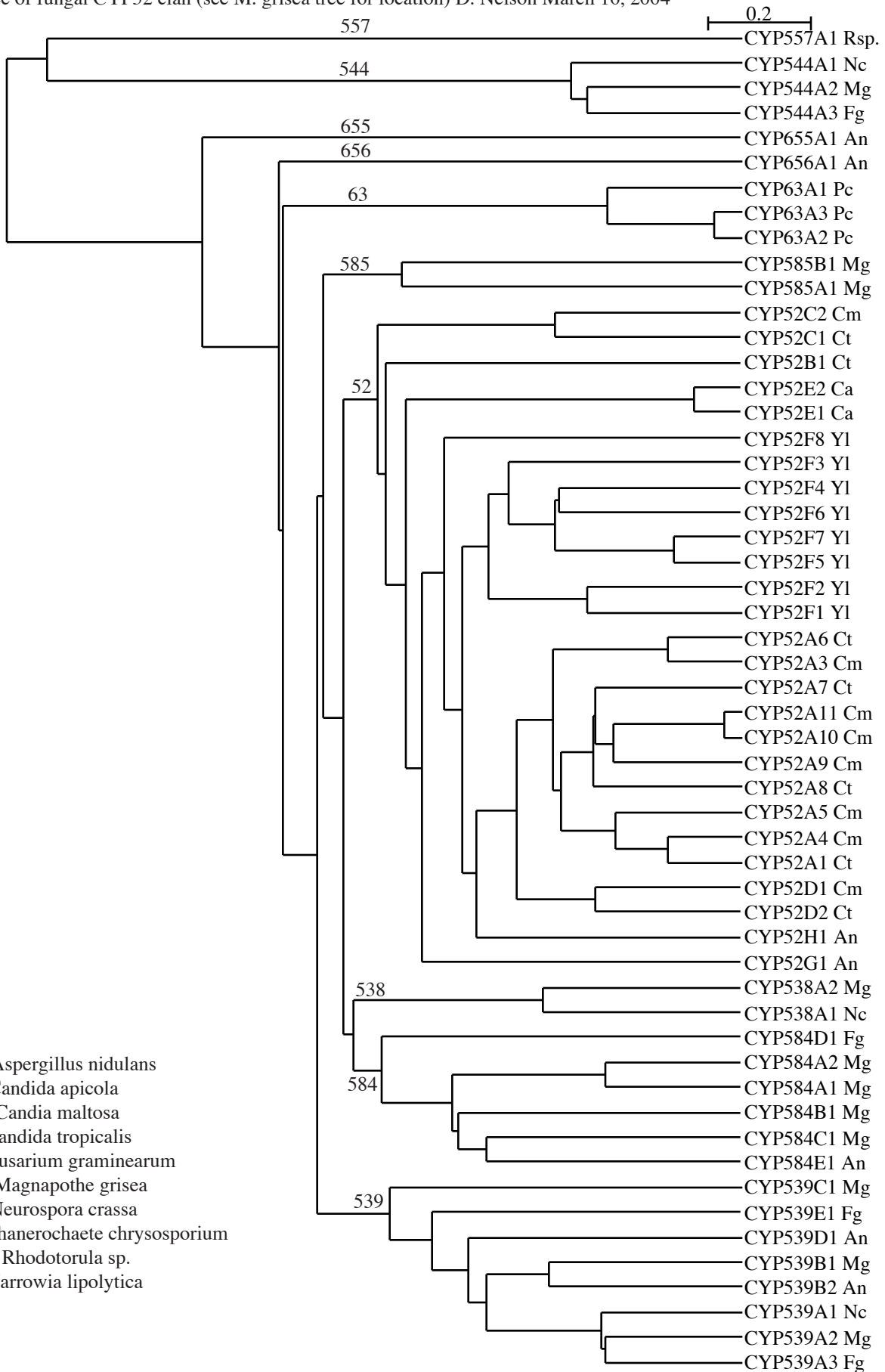


UPGMA tree of fungal CYP52 clan (see *M. grisea* tree for location) D. Nelson March 16, 2004



An = *Aspergillus nidulans*
 Ca = *Candida apicola*
 Cm = *Candida maltosa*
 Ct = *Candida tropicalis*
 Fg = *Fusarium graminearum*
 Mg = *Magnapothe grisea*
 Nc = *Neurospora crassa*
 Pc = *Phanerochaete chrysosporium*
 Rsp. = *Rhodotorula* sp.
 Yl = *Yarrowia lipolytica*